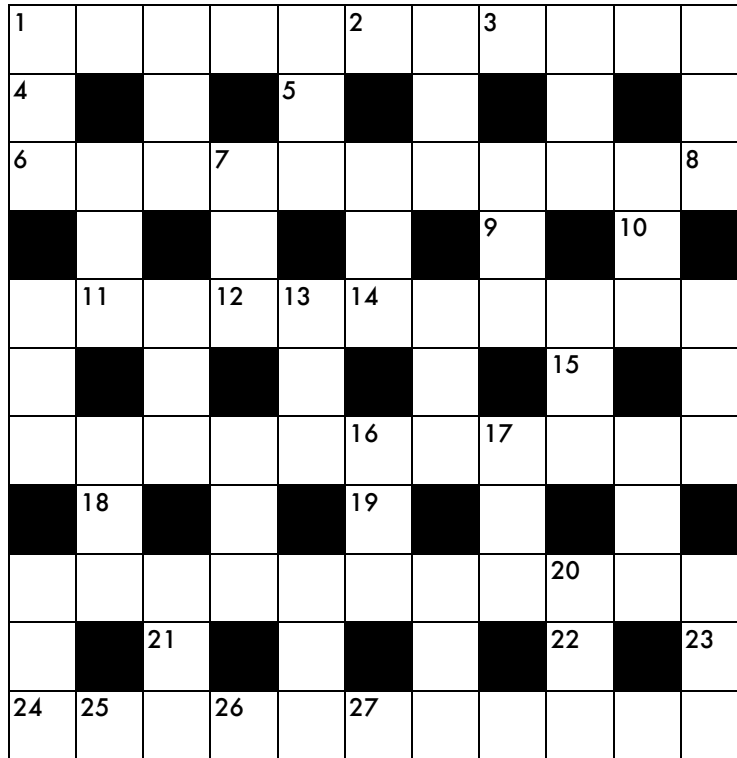


Pathfinder

Nathan Curtis

In this puzzle, each answer starts in the correspondingly numbered square, in the direction indicated, and makes one or more right-angled turns as it winds through the grid. When you have finished, every white square will be used in exactly two entries.



- | | | | |
|-----|------------------------------------------|-----|---------------------------------------------------------------|
| 1E | Expansive residence (7) | 15S | Like the sound of a trumpet (7) |
| 2E | SI base unit abbreviated "cd" (7) | 16E | Academy Award winner for <i>12 Years a Slave</i> (12, 2 wds.) |
| 3E | Ski lodge (6) | 17E | 2007 Nobel laureate (6, 2 wds.) |
| 4S | Politically dystopian, in a way (9) | 18N | Epitome of slowness (5) |
| 5S | 2012 animated feature (5) | 19S | Befitting a king or queen (5) |
| 6N | Like much 19th-Century literature (8) | 20S | Gait between a trot and a gallop (6) |
| 7E | The moon completes one every 27 days (5) | 21S | Grave (6) |
| 8N | Where Oscar the Grouch lives (8, 2 wds.) | 22N | Measure of a ranch (7) |
| 9S | Condition in a contract (11) | 23S | Phil Coulson, in a series on ABC (5) |
| 10N | Neon-colored aquarium fish (6) | 24N | Beatniks' headwear (6) |
| 11N | Clark's exploring partner (5) | 25E | Wisdom tooth, for one (5) |
| 12W | Behaves like a pendulum, say (10) | 26E | Like Canada, vis-à-vis the United States (6) |
| 13S | Titles are often written in them (7) | 27E | French Impressionist painter (6) |
| 14N | Dodges (6) | | |
| 15N | Word in Arizona's state nickname (6) | | |