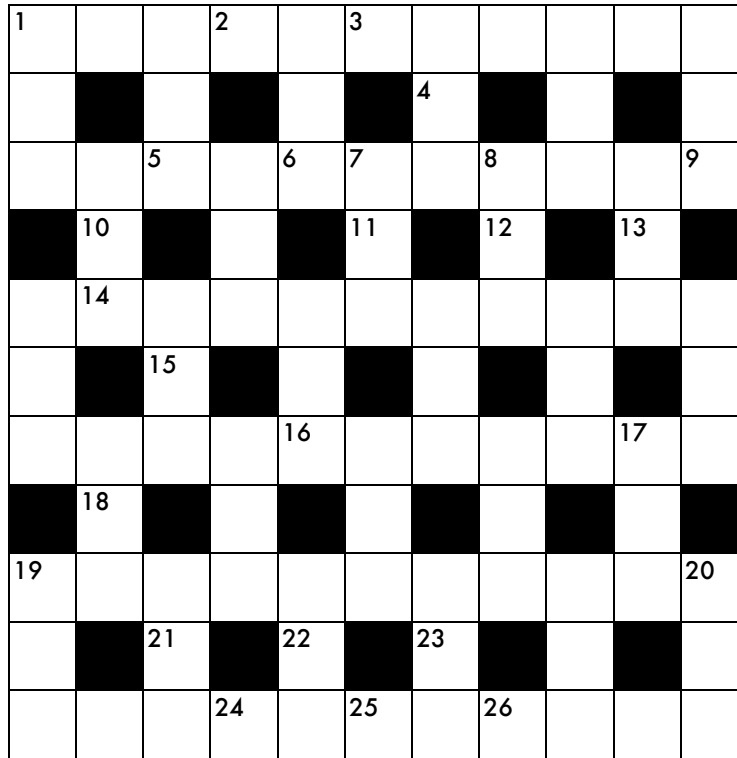


Pathfinder

In this puzzle, each answer starts in the correspondingly numbered square, in the direction indicated, and makes one or more right-angled turns as it winds through the grid. When you have finished, every white square will be used in exactly two entries.



- | | | | |
|-----|---|-----|--|
| 1S | Pathfinder manufacturer (6) | 15S | Having no missing parts (6) |
| 2E | Saved for later (6, 2 <i>wds.</i>) | 16N | Clef used for violin music (6) |
| 3E | Spanish folk hero (5, 2 <i>wds.</i>) | 17S | Spoken languages (7) |
| 4S | Corporate presence (5) | 18S | Song covered by The Clash (13, 4 <i>wds.</i>) |
| 5E | Place that gazes back, per Nietzsche (5) | 19S | Rise up (6) |
| 6N | _____ box (many a pop-up window) (6) | 20S | Took a stab at (7) |
| 7S | Petrified resin (5) | 21N | Durability (9) |
| 8E | "You name it" (8) | 22N | Awestruck, perhaps (10) |
| 9N | One of the two cheapest avenues in Monopoly (6) | 23N | Makes noises like Lewis Carroll's Jabberwock (7) |
| 10S | Before-dinner drink (8) | 24E | Fossil site whose name means "the tar" (6, 2 <i>wds.</i>) |
| 11N | Medium for some sculptors (6) | 25W | Topple (8, 2 <i>wds.</i>) |
| 12S | State whose proposed name, Columbia, was rejected to avoid confusion (10) | 25E | Made a big to-do (6) |
| 13N | Romeo slew him in Act III (6) | 26W | Part of a metropolitan area (6) |
| 14N | Conveying (9, 2 <i>wds.</i>) | | |